

**OIL REMOVERS / SKIMMERS**  
**DISOLEATORI**



- EN DISC OIL REMOVER
- IT DISOLEATORE A DISCO



COD. DEPDISC300P



EN	IT
Stainless steel and aluminum structure. Polymer disc. Disc size: 300 mm	Struttura in acciaio inox e alluminio. Disco in polimero. Dimensione disco: 300 mm


- EN DISC OIL REMOVER
- IT DISOLEATORE A DISCO



COD. DEPDISC300L



EN	IT
Stainless steel and aluminum structure. Stainless steel disc. Disc size: 300 mm	Struttura in acciaio inox e alluminio. Disco in acciaio inox. Dimensione disco: 300 mm

 Timer on request  
Timer disponibile su richiesta

**EN** DISC OIL REMOVER

**IT** DISOLEATORE A DISCO



COD. DEPDISC400P



EN	IT
Stainless steel and aluminum structure. Polymer disc. Disc size: 400 mm	Struttura in acciaio inox e alluminio. Disco in polimero Dimensione disco: 400 mm

**EN** DISC OIL REMOVER

**IT** DISOLEATORE A DISCO



COD. DEPDISC400L



EN	IT
Stainless steel and aluminum structure. Stainless steel disc. Disc size: 400 mm	Struttura in acciaio inox e alluminio. Disco in acciaio inox. Dimensione disco: 400 mm



Timer on request

Timer disponibile su richiesta

EN DISC OIL REMOVER

IT DISOLEATORE A DISCO



COD. DEPDISC500P



EN	IT
Stainless steel and aluminum structure. Polymer disc. Disc size: 500 mm	Struttura in acciaio inox e alluminio. Disco in polimer Dimensione disco: 500 mm

EN DISC OIL REMOVER

IT DISOLEATORE A DISCO



COD. DEPDISC500L



EN	IT
Stainless steel and aluminum structure. Stainless steel disc Disc size: 500 mm	Struttura in acciaio inox e alluminio. Disco in acciaio inox. Dimensione disco: 500 mm



Timer on request  
Timer disponibile su richiesta

- EN BELT OIL REMOVER
- IT DISOLEATORE A NASTRO



COD. DEPMINI



EN	IT
Structure in stainless steel, aluminum and PVC, Minimum Draught: 300 mm Tape width: 30 mm	Struttura in acciaio inox, alluminio e PVC, Pescaggio minimo: 300 mm Larghezza nastro: 30 mm


- EN BELT OIL REMOVER
- IT DISOLEATORE A NASTRO



COD. DEPBELT60/600



EN	IT
Stainless steel, aluminum and PVC structure, Belt width: 60 mm Draught: 600 mm	Struttura in acciaio inox, alluminio e PVC, Larghezza nastro: 60 mm Pescaggio: 600 mm

 Timer on request  
Timer disponibile su richiesta

- EN BELT OIL REMOVER
- IT DISOLEATORE A NASTRO



COD. DEPBELT60/700



EN	IT
Stainless steel, aluminum and PVC structure, Belt width: 60 mm Draught: 700 mm	Struttura in acciaio inox, alluminio e PVC, Larghezza nastro: 60 mm Pescaggio: 700 mm


- EN BELT OIL REMOVER
- IT DISOLEATORE A NASTRO



COD. DEPBELT60/800



EN	IT
Stainless steel, aluminum and PVC structure, Belt width: 60 mm Draught: 800 mm	Struttura in acciaio inox, alluminio e PVC, Larghezza nastro: 60 mm Pescaggio: 800 mm

 Timer on request  
Timer disponibile su richiesta

EN BELT OIL REMOVER

IT DISOLEATORE A NASTRO



COD. DEPBELT60/900



EN	IT
Stainless steel, aluminum and PVC structure, Belt width: 60 mm Draught: 900 mm	Struttura in acciaio inox, alluminio e PVC, Larghezza nastro: 60 mm Pescaggio: 900 mm



Timer on request

Timer disponibile su richiesta

EN BELT OIL REMOVER

IT DISOLEATORE A NASTRO



COD. DEPBELT 200/600



EN	IT
Stainless steel, aluminum and PVC structure, Belt width: 200 mm Draught: 600 mm	Struttura in acciaio inox, alluminio e PVC, Larghezza nastro: 200 mm Pescaggio: 600 mm

EN BELT OIL REMOVER

IT DISOLEATORE A NASTRO



COD. DEPBELT 200/800



EN	IT
Stainless steel, aluminum and PVC structure, Belt width: 200 mm Draught: 800 mm	Struttura in acciaio inox, alluminio e PVC, Larghezza nastro: 200 mm Pescaggio: 800 mm

EN BELT OIL REMOVER

IT DISOLEATORE A NASTRO



COD. DEPBELT 200/1000



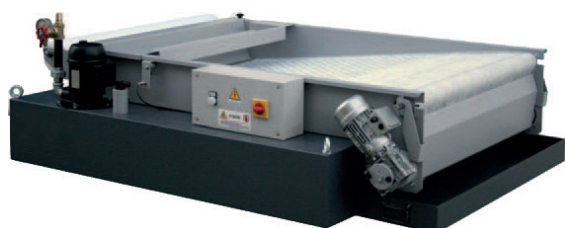
EN	IT
Stainless steel, aluminum and PVC structure, Belt width: 200 mm Draught: 1000 mm	Struttura in acciaio inox, alluminio e PVC, Larghezza nastro: 200 mm Pescaggio: 1000 mm



**EN** INDUSTRIAL BELT FILTRATION

**IT** FILTRAZIONE INDUSTRIALE A TAPPETO

**COD. DEPET300**

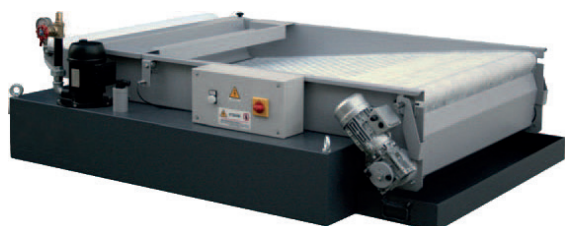


EN	IT
Dimensions: 760x1010x510h	Ingombri: 760x1010x510h
Tank capacity: 135 Lt	Capacità vasca: 135 Lt
Emulsion flow rate: 25-60 Lt / min	Portata emulsione: 25-60 Lt/min
Raw oil flow rate: 10-30 Lt / min	Portata Olio intero: 10-30 Lt/min

**EN** INDUSTRIAL BELT FILTRATION

**IT** FILTRAZIONE INDUSTRIALE A TAPPETO

**COD. DEPET500**



EN	IT
Dimensions: 960x1310x510h	Ingombri: 960x1310x510h
Tank capacity: 240 Lt	Capacità vasca: 240 Lt
Emulsion flow rate: 60-100 Lt / min	Portata emulsione: 60-100 Lt/min
Raw oil flow rate: 30-50 Lt / min	Portata Olio intero: 30-50 Lt/min

**EN** INDUSTRIAL BELT FILTRATION

**IT** FILTRAZIONE INDUSTRIALE A TAPPETO

**COD. DEPET700**

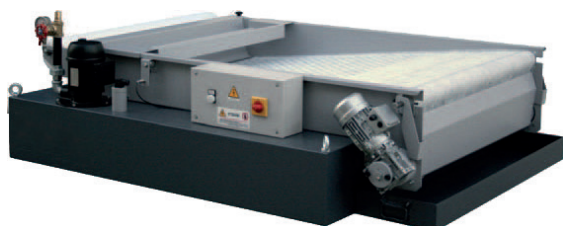


EN	IT
Dimensions: 1250x1810x510h	Ingombri: 1250x1810x510h
Tank capacity: 465 Lt	Capacità vasca: 465 Lt
Emulsion flow rate: 100-170 Lt / min	Portata emulsione: 100-170 Lt/min
Raw oil flow rate: 50-85 Lt / min	Portata Olio intero: 50-85 Lt/min

**EN** INDUSTRIAL BELT FILTRATION

**IT** FILTRAZIONE INDUSTRIALE A TAPPETO

**COD. DEPET1000**



EN	IT
Dimensions: 1620x1810x510h	Ingombri: 1620x1810x510h
Tank capacity: 610 Lt	Capacità vasca: 610 Lt
Emulsion flow rate: 100-250 Lt / min	Portata emulsione: 100-250 Lt/min
Crud oil flow rate: 50-125 Lt / min	Portata Olio intero: 50-125 Lt/min

**EN** INDUSTRIAL BELT FILTRATION

**IT** FILTRAZIONE INDUSTRIALE A TAPPETO

**COD. DEPET1200**

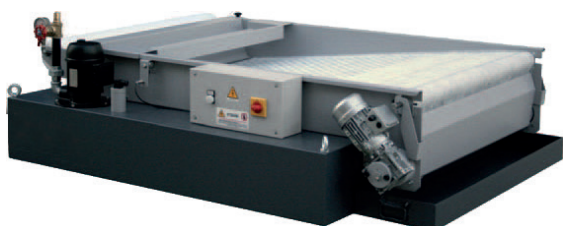


EN	IT
Dimensions: 2050x1810x510h	Ingombri: 2050x1810x510h
Tank capacity: 770 Lt	Capacità vasca: 770 Lt
Emulsion flow rate: 250-350 Lt / min	Portata emulsione: 250-350 Lt/min
Raw oil flow rate: 125-175 Lt / min	Portata Olio intero: 125-175 Lt/min

**EN** INDUSTRIAL BELT FILTRATION

**IT** FILTRAZIONE INDUSTRIALE A TAPPETO

**COD. DEPET1500**



EN	IT
Dimensions: 2000x1810x610h	Ingombri: 2000x1810x610h
Tank capacity: 1150 Lt	Capacità vasca: 1150 Lt
Emulsion flow rate: 250-500 Lt / min	Portata emulsione: 250-500 Lt/min
Raw oil flow rate: 125-250 Lt / min	Portata Olio intero: 125-250 Lt/min

**EN** INDUSTRIAL BELT FILTRATION

**IT** FILTRAZIONE INDUSTRIALE A TAPPETO



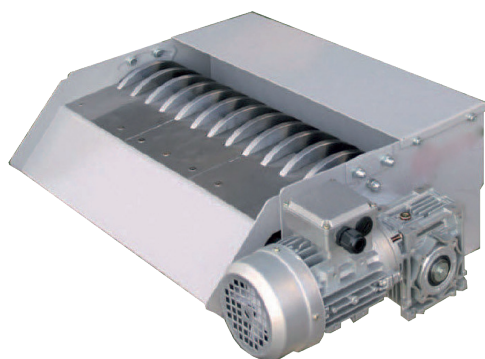
**COD. DEPEASY**



EN	IT
<p><b>BELT FILTRATION</b></p> <ul style="list-style-type: none"> <li>- Filtration of emulsion, coolant and raw oil</li> <li>- Max viscosity: 20 cSt at 40 °C</li> <li>- Flow rate: from 30 to 500 L / min</li> <li>- Filtration range: from 10 to 60 microns</li> </ul>	<p><b>FILTRAZIONE A NASTRO</b></p> <ul style="list-style-type: none"> <li>- Filtrazione di emulsione, refrigerante e olio grezzo</li> <li>- Viscosità massima: 20 cSt a 40 °C</li> <li>- Portata: da 30 a 500 L/min</li> <li>- Range di filtrazione: da 10 a 60 micron</li> </ul>

**EN** INDUSTRIAL MAGNETIC FILTRATION

**IT** FILTRAZIONE INDUSTRIALE MAGNETICA



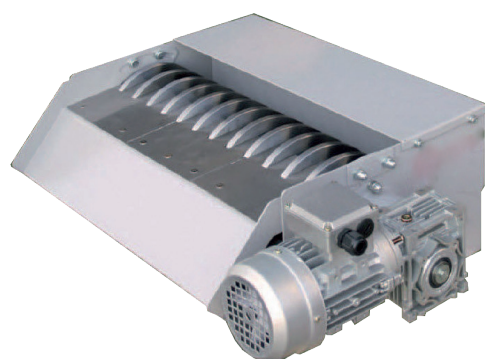
**COD. DEP-K50**



EN	IT
Dimensions: 350X570X222h	Ingombri: 350X570X222h
Full Oil Flow: 25 lt/min	Portata Olio Intero: 25 lt/min

**EN** INDUSTRIAL MAGNETIC FILTRATION

**IT** FILTRAZIONE INDUSTRIALE MAGNETICA



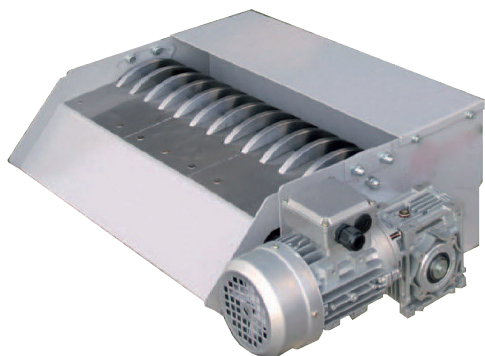
**COD. DEP-K100**



EN	IT
Dimensions: 424X570X222h	Ingombri: 424X570X222h
Emulsion flow rate: 100 lt/min	Portata Emulsione: 100 lt/min
Full oil flow: 50 lt/min	Portata Olio Intero: 50 lt/min

**EN** INDUSTRIAL MAGNETIC FILTRATION

**IT** FILTRAZIONE INDUSTRIALE MAGNETICA



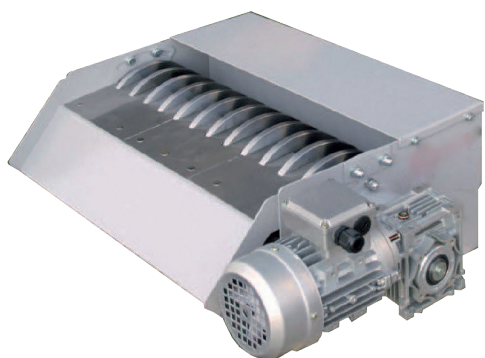
**COD. DEP-K150**



EN	IT
Dimensions: 540X570X222h	Ingombri: 40X570X222h
Emulsion flow rate: 150 lt/min	Portata Emulsione: 150 lt/min
Full oil flow: 75 lt/min	Portata Olio Intero: 75 lt/min

**EN** INDUSTRIAL MAGNETIC FILTRATION

**IT** FILTRAZIONE INDUSTRIALE MAGNETICA



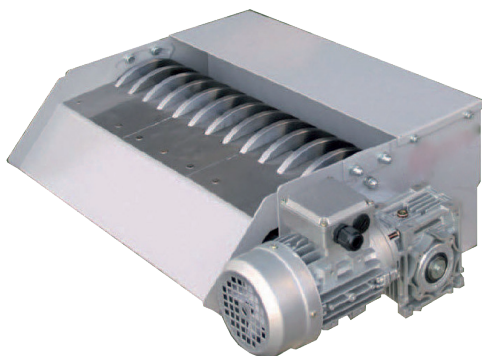
**COD. DEP-K200**



EN	IT
Dimensions: 611X570X222h	Ingombri: 611X570X222h
Emulsion flow rate: 200 lt/min	Portata Emulsione: 200 lt/min
Full Oil Flow: 100 lt/min	Portata Olio Intero: 100 lt/min

**EN** INDUSTRIAL MAGNETIC FILTRATION

**IT** FILTRAZIONE INDUSTRIALE MAGNETICA



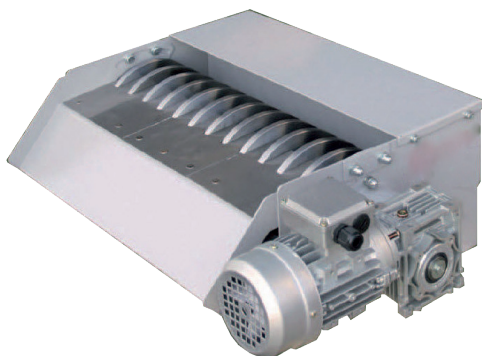
**COD. DEP-K250**



EN	IT
Dimensions: 695X570X222h	Ingombri: 695X570X222h
Emulsion flow rate: 250 lt/min	Portata Emulsione: 250 lt/min
Full Oil Flow: 125 lt/min	Portata Olio Intero: 125 lt/min

**EN** INDUSTRIAL MAGNETIC FILTRATION

**IT** FILTRAZIONE INDUSTRIALE MAGNETICA



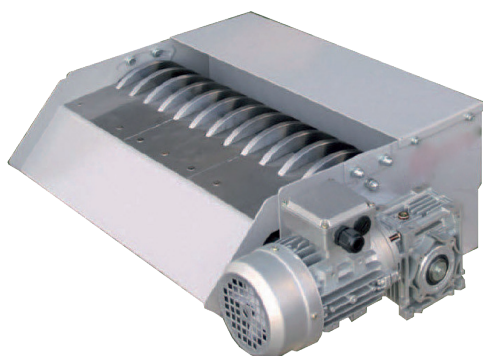
**COD. DEPK300**



EN	IT
Dimensions: 840X570X222h	Ingombri: 840X570X222h
Emulsion flow rate: 300 lt/min	Portata Emulsione: 300 lt/min
Full Oil Flow: 150 lt/min	Portata Olio Intero: 150 lt/min

**EN** INDUSTRIAL MAGNETIC FILTRATION

**IT** FILTRAZIONE INDUSTRIALE MAGNETICA



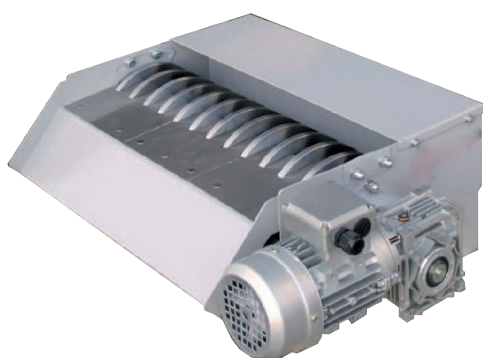
**COD. DEP-K400**



EN	IT
Dimensions: 1032X570X222h	Ingombri: 1032X570X222h
Emulsion flow rate: 400 lt/min	Portata Emulsione: 400 lt/min
Full Oil Flow: 200 lt/min	Portata Olio Intero: 200 lt/min

**EN** INDUSTRIAL MAGNETIC FILTRATION

**IT** FILTRAZIONE INDUSTRIALE MAGNETICA



**COD. DEP-K500**



EN	IT
Dimensions: 1210X570X222h	Ingombri: 1210X570X222h
Emulsion flow rate: 500 lt/min	Portata Emulsione: 500 lt/min
Full Oil Flow: 200 lt/min	Portata Olio Intero: 200 lt/min



EN INDUSTRIAL FILTRATION

IT FILTRAZIONE INDUSTRIALE



COD. DEPSP



EN	IT
<p><b>SELF-CLEANING DRUM FILTRATION</b>                      Purification of raw oils and emulsions                      Max viscosity: 20 cSt at 40 ° C                      Emulsion flow rate: from 300 to 1200 L / min                      Raw oil flow rate: from 150 to 600 L / min                      Degree of filtration. from 25 to 50 microns</p>	<p><b>FILTRAZIONE AUTOPULENTE A TAMBURO</b>                      Depurazione oli crudi ed emulsioni                      Viscosità max: 20 cSt a 40°C                      Portata emulsione: da 300 a 1200 L/min                      Portata olio crudo: da 150 a 600 L/min                      Grado di filtrazione. da 25 a 50 micron</p>

